

# MARCH EVENTS 2024



## Friends of the San Pedro River

### A Note About Our Walks

All walks are free and open to the public. No reservations are required. Well-behaved dogs on leashes are welcome on all but the birdwatching walks. Children are welcome but younger ones will have their patience tested. For more information call (520) 508-4445 or email [fspr@sanpedroriver.org](mailto:fspr@sanpedroriver.org).

### Nature Walks

The San Pedro River is one of the last free flowing rivers in the Southwest and home to one of the largest cottonwood-willow riparian forests remaining in Arizona. On this walk we will discuss the interactions of the living and non-living components that make up the ecosystem of the river and its importance to the surrounding area. The walks are 1.5 to 2 miles long over easy terrain. These are slower paced than a hike and suitable for most adults and children.

**Saturdays, March 2 and 16**  
River walks depart from the San Pedro House at **9:00am**



### Bird Walks

The San Pedro Riparian National Conservation Area (SPRNCA) provides habitat for over 100 species of breeding birds. The San Pedro River is also a critical avian migration corridor that provides water, food and shelter for another 250 migratory and wintering birds. Novice and experienced bird watchers attend our bird walks to view the diverse avian community of the SPRNCA. We usually observe 30-60 species on these popular walks, which last approximately three hours. Bring water, hat and binoculars. These walks can be moderately difficult on uneven terrain. Please realistically assess your ability to take part in these walks.

**Wednesdays,  
March 13 and 27**  
Bird walks depart from the San Pedro House at **7:00am**



### EOP BIRD WALKS

The Sierra Vista Environmental Operations Park (EOP) is open to public bird watching tours on Sunday mornings year round. Group size is limited to 15 people, first-come, first-served. Arrive before the starting time to sign a waiver and secure a spot. The 2-2.5 hours walk is behind locked gates and you must stay with the group. Bring water, hat, and binoculars. A bird checklist will be provided.

**Sundays,  
March 3, 11, 17, 24, 31**  
**7:00am**

Meet at the viewing platform parking lot on the west side of the EOP. From Hwy 90, 3.5 miles east of Sierra Vista, turn north between mile markers 324 and 325. "Environmental Operations Park" is searchable on Google Maps.



### Bird Walk, Hereford Bridge Area

For a different birding experience, novice and experienced birders are welcome to join our knowledgeable bird walk docents for a special walk along the San Pedro River. The walk will last approximately 3 hours. Bring water, hat, and binoculars. This walk will be moderately difficult on uneven terrain. Please realistically assess your ability to take part in this walk.

**Saturday, March, 2 7:30 a.m.**

Meet at the Hereford Road Bridge Trailhead parking area, located 8 miles east of Highway 92 on Hereford Road. The trailhead entrance road is just before the bridge on the west side of the river. Look for the sign and turn south. "Hereford Bridge Trailhead" is searchable in Google Maps.

## See Page 2 for the March History Walk Schedule

#### San Pedro House Nature Store & Visitor Information

9800 E. Highway 90  
Sierra Vista, AZ 85635  
Open Daily: 9:30am - 4:30pm  
(520) 508-4445

[sanpedrohouse@sanpedroriver.org](mailto:sanpedrohouse@sanpedroriver.org)

#### Friends of the San Pedro River

9800 E. Highway 90,  
Sierra Vista, AZ 85635  
(520) 459-2555  
[fspr@sanpedroriver.org](mailto:fspr@sanpedroriver.org)  
[www.sanpedroriver.org](http://www.sanpedroriver.org)

#### Fairbank Schoolhouse Museum Fairbank Historic Townsite

Open Friday, Saturday, and Sunday  
9:30 a.m. to 4:30 p.m.  
(520) 457-3062

[schoolhouse@sanpedroriver.org](mailto:schoolhouse@sanpedroriver.org)

The San Pedro House is 7 miles east of Sierra Vista on Highway 90. Look for a turn on the south side of the highway about .5 miles west of the San Pedro River. The San Pedro House is searchable in Google Maps as "San Pedro House."

The Fairbank Townsite is located 10 miles east of Whetstone on Highway 82. The entrance to the parking area is on the north side of the highway about .5 miles east of the San Pedro River. "Fairbank, AZ" is searchable on Google Maps for directions.

## *Take a walk back in time...on one of our docent-led History Walks*

### **History Walk at Fairbank Historic Townsite, Saturday, March 2, 10 a.m.**

Tour this historic townsite with docents from the Friends of the San Pedro River. Come on out for this great event, to be led by FSPR docent Ron Stewart. It's a good way to learn a little history of the area and enjoy some time outdoors. The tour is on gravel walkways that are level. The walk to the cemetery and return is about 1 mile total. Reaching the cemetery requires walking up a short slope with poor footing and loose rock. You are welcome to participate in the townsite tour and not go to the cemetery. The Fairbank Townsite is located 10 miles east of Whetstone on Highway 82. The entrance to the parking area is on the north side of the highway about .5 miles east of the San Pedro River. The tour will meet near the Schoolhouse Museum just inside the Townsite. "Fairbank, AZ" is searchable in Google Maps.

### **History Walk to Presidio Santa Cruz de Terrenate, Saturday, March 9, 10 a.m.**

Join a walking tour of the Spanish Presidio of Santa Cruz de Terrenate with FSPR docent Jeff Hustad. This fort was operational during the late 1770s, the centerpiece for a planned Spanish occupation of the San Pedro River Valley that failed. This is a three-mile round trip walk over trails and uneven ground. The return walk is gradually uphill. There is no shade, and it will be hot on sunny days. Please realistically assess your ability to do this walk. Wear a hat, sun protection, appropriate clothing, and sturdy shoes. Bring water and a snack. Meet at the Presidio Santa Cruz Terrenate Trailhead, located 1.7 miles north of Highway 82 on the east side of In Balance Ranch Road. In Balance Ranch Road (N. Kellar Road on Google Maps) is a north turn off of Highway 82, 8.3 miles east of Whetstone, about 1 mile west of the San Pedro River. There is a large parking area at the Trailhead where the group will meet. "Presidio Santa Cruz Terrenate Trailhead" is searchable in Google Maps.

### **History Walk to Millville and Petroglyph Site, Saturday, March 16, 9 a.m.**

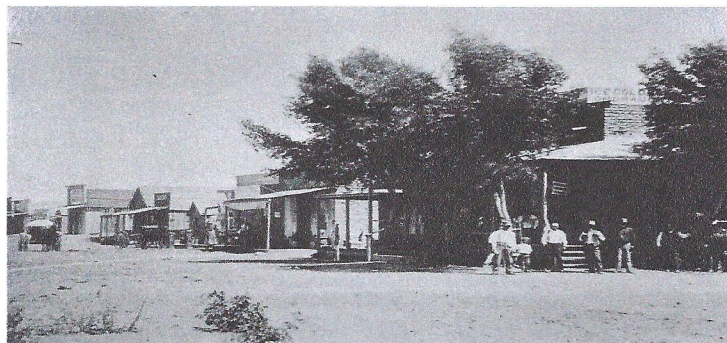
Take a tour of Millville, the location of several historic silver mills and a once thriving town, as well as an adjacent Indian rock art site, with FSPR docent Richard Bauer. The tour will focus on the history of mining and the mills, which were active during the Tombstone silver boom. This is about a 2 mile walk on an uneven dirt and gravel trail that crosses through a deep wash. There is no shade, and it will be hot on sunny days. Please realistically assess your ability to do this walk. Wear a hat, sun protection, appropriate clothing, and sturdy shoes, and bring water and a snack. Meet at the Millville and Petroglyph Discovery Trail parking area. This trailhead is located 7.5 miles east of Sierra Vista on Charleston Road. This is not the parking area right by the river: Look for the "Fire Danger Level" sign on the north side of Charleston Rd. at the entrance to the parking lot, about 0.5 miles east of the river. Meet by the vault toilet. This location is searchable as "Millville and Petroglyph Discovery Trail" in Google Maps.

### **History Walk to Clanton Ranch, Saturday, March 23, 9 a.m.**

Join FSPR Sandy Heusman for a walk to the Clanton Ranch site. Here Old Man Clanton grazed (stolen) cattle in a large pasture along the San Pedro. This site was a key location in the Wyatt Earp vs. The Cowboys epic. The round trip to the site requires 1.5 miles of walking total. The trail is uneven gravel and dirt. The last 100 feet or so are up a gradual hill on a rocky, uneven trail. Make sure you are able to handle this walk. Wear a hat, sun protection, appropriate clothing, and sturdy shoes, and bring water and a snack. Meet at the Escapule Trailhead. Escapule Road intersects with Charleston Road 6 miles east of Sierra Vista. Turn south on Escapule Road and drive 1.3 miles south. Look for a dirt parking area on the left side. The docent will place a directional sign at its entrance, a left turn. This location is searchable in Google Maps as "Escapule Trailhead".

### **History Walk to Presidio Santa Cruz de Terrenate, Saturday, March 30, 9 a.m.**

Join a walking tour of the Spanish Presidio of Santa Cruz de Terrenate with FSPR docent Jeff Hustad. This fort was operational during the late 1770s, the centerpiece for a planned Spanish occupation of the San Pedro River Valley that failed. This is a three-mile round trip walk over trails and uneven ground. The return walk is gradually uphill. There is no shade, and it will be hot on sunny days. Please realistically assess your ability to do this walk. Wear a hat, sun protection, appropriate clothing, and sturdy shoes. Bring water and a snack. Meet at the Presidio Santa Cruz Terrenate Trailhead, located 1.7 miles north of Highway 82 on the east side of In Balance Ranch Road. In Balance Ranch Road (N. Kellar Road on Google Maps) is a north turn off of Highway 82, 8.3 miles east of Whetstone, about 1 mile west of the San Pedro River. There is a large parking area at the Trailhead where the group will meet. "Presidio Santa Cruz Terrenate Trailhead" is searchable in Google Maps.



Historic photo of Fairbank